

H. R. LABOUNTY SAFETY AWARD PROGRAM NOMINATION FORM



OPS-MAINT; OPS-CONST

Agency: YLWD

Employee Nominated:

Name: Jeremy Smith

Job Classification: Safety and Training Tech.

Reason for Nomination: While conducting routine checks I noticed that there was a potential electrical hazard at one of the districts lift stations. The issue is that the bubblers for the lift station are surrounded by 480v wiring, thus requiring some arc-flash protection. The risk of potential for electrical shock needed to be minimized. So between the electrician and myself we came up with a solution to remove the bubblers from the area of 480v wiring and mounted the bubblers outside of the 480v area. The new location is still water proof and still accessible but without the arc-flash risk. See attached pictures.

Nominated by: Gina Knight

Signature:

Date:

2/10/16

General Manager:

Date:

February 11, 2016

Please attach supporting documents and/or digital photos and email to:

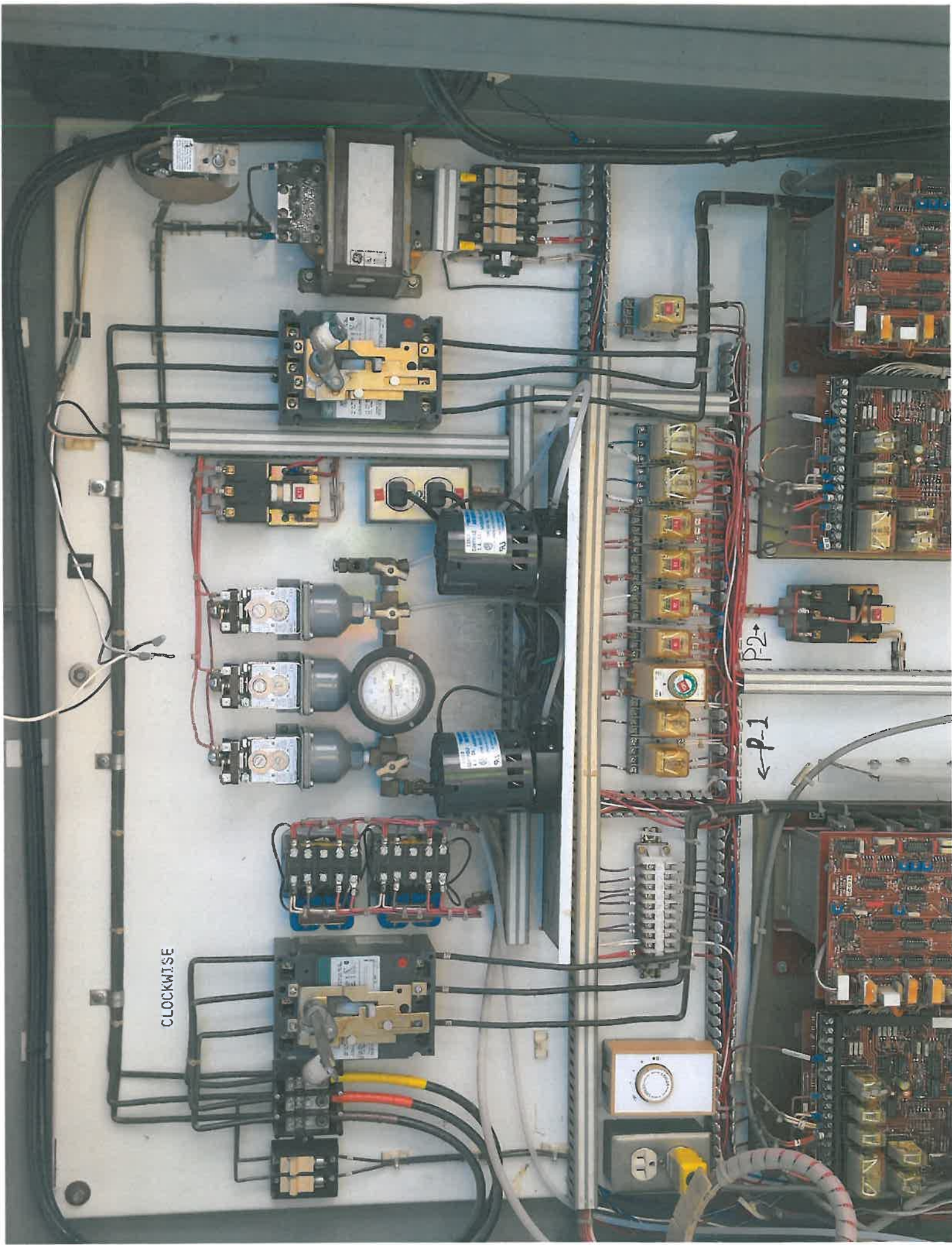
tlofing@acwajpia.com

ACWA/JPIA
P.O. Box 619082
Roseville, CA 95661-9082
FAX: (916) 774-7040

CLOCKWISE

P-2 →

← P-1



PUMP SILE

HAND OFF AUTO

ARM

DI-GI-FIRE SYSTEM MONITOR

POWER OFF READY

ARMED ON

OPERATION ON

FAULT COMPLETE

ARMED BY LARM TRIP

SYSTEM COMPLETE FAILURE

INITIAL LARM TRIP

INITIAL CONTACTOR FAILURE

INITIAL LARM TRIP

INITIAL SYSTEM FAILURE

INITIAL SYSTEM FAILURE

ALARM RESET

TEST TEST

HA HA TEST

DI-GI-FIRE SYSTEM MONITOR

POWER OFF READY

ARMED ON

OPERATION ON

FAULT COMPLETE

ARMED BY LARM TRIP

SYSTEM COMPLETE FAILURE

INITIAL LARM TRIP

INITIAL CONTACTOR FAILURE

INITIAL LARM TRIP

INITIAL SYSTEM FAILURE

INITIAL SYSTEM FAILURE

ALARM RESET

PUMP SILE

HAND OFF AUTO

ARM

PUMP SILE

HAND OFF AUTO

ARM

TEST TEST

HA HA TEST

DI-GI-FIRE SYSTEM MONITOR

POWER OFF READY

ARMED ON

OPERATION ON

FAULT COMPLETE

ARMED BY LARM TRIP

SYSTEM COMPLETE FAILURE

INITIAL LARM TRIP

INITIAL CONTACTOR FAILURE

INITIAL LARM TRIP

INITIAL SYSTEM FAILURE

INITIAL SYSTEM FAILURE

ALARM RESET

PUMP SILE

HAND OFF AUTO

ARM